



# Safe Harbour

Pentland House, The Bank,  
St Mary's, TR21 0HY



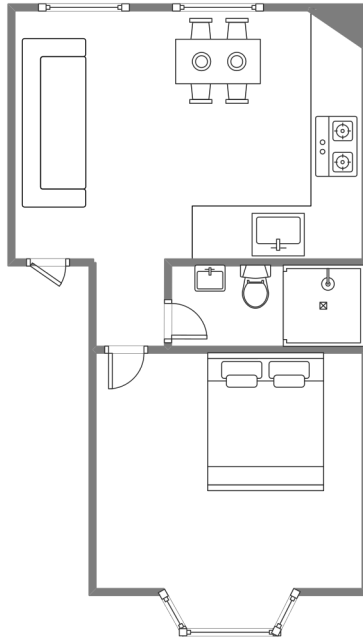
## Sleeps 2 | Friday Change over

- Double Arrangement
- Internet Access
- Dog Friendly
- Convenient location for beaches and Quay
- Sea View

A comfortable and newly refurbished ground floor apartment in the heart of Hugh Town, next to the historic Mermaid Inn and offering stunning views of St Mary's harbour and the islands beyond.

The living area makes maximum use of the space available and comprises a sitting room with a bay window arrangement, a bright and modern shower room and a well-equipped dining kitchen with a splendid view of the harbour. Sleeping two in a double bed, this flat is also very well suited to single occupancy. Safe Harbour is positioned at the hub of island activities, a stone's throw from the bustling square at the end of Hugh Street with its shops and pubs, and within fifty yards of St Mary's quay for all your boating requirements. An additional benefit of Safe Harbour is that it is located in the same building as [Far Horizon](#) and [The Cabin](#) so it can be booked in conjunction with two or three holiday homes for larger groups of up to eight guests.

# Layout



## Getting to the property

### Map of St Marys



### Directions from the Quay | Walking time: 2-3 minutes

Head towards the entrance to the quay  
Turn left at The Mermaid Inn on to Hugh Street  
Keep to the left side of the road

Pentland House is the first building  
Enter the main door to Pentland House  
Safe Harbour is situated on the first floor

[What3words///worth.lyricism.talker](http://What3words///worth.lyricism.talker)

Scilly Self Catering  
Lower Strand  
Isles of Scilly, TR21 0PS

[Enquiries@scillyselfcatering.com](mailto:Enquiries@scillyselfcatering.com)  
01720 422082  
[www.scillyselfcatering.com](http://www.scillyselfcatering.com)